

# the MoA Quarterly

A NEWSLETTER OF THE  
MUSEUM OF ANTHROPOLOGY, MIZZOU

## NEW THIS QUARTER:

Note From The Director

Giving Day 2023 PAGE 2

Collection Spotlight PAGE 2

Exhibits Update PAGE 3



Kurt Goddard studies a sword guard at the Museum Support Center.

## NOTE FROM THE DIRECTOR

Welcome Spring! The warm weather this past weekend was glorious for the True/False Film Fest here in Columbia, and now we look forward to the daffodils popping open any day! Our new research associate, John Cunning, features the longbow from the 1922 Robin Hood silent movie with Douglas Fairbanks; read about this interesting bow on page 2. We have two great new students working with us this semester and are excited to provide an opportunity for them to gain real-world experience in the museum field.

Our team has been hard at work building the new galleries. As we prepare objects for exhibit, we must consider their long-term care. A new base for the seal intestine parka from Kotzebue, Alaska, has been built allowing it to be

safely displayed without damaging any of the delicate seams. And wait until you see the late 18th century scroll from Japan in the Grayson Archery gallery; it is stunning next to the archery equipment. We continue to work with Native American communities on exhibits and interpretation and look forward to including native languages alongside English on object labels.

The last renovation project begins in April. Once this is complete, we will be able to build exhibits in our hallway spaces. Mizzou Giving Day is this week, and we hope you will continue your support of the museum. Thank you! ♦

- CANDACE SALL

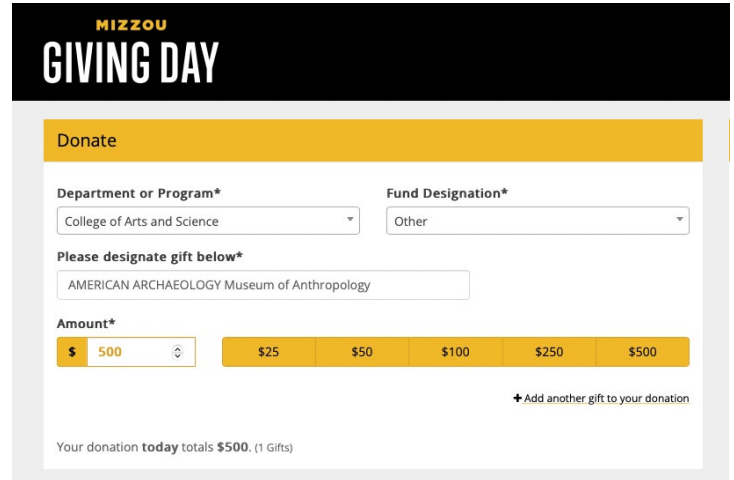
# GIVING DAY 2023

BY AMANDA STALEY HARRISON

Wednesday, March 8th through Thursday, March 9th is Giving Day! Mizzou Giving Day is a 24-hour campaign from noon to noon which involves donors making a concentrated impact through charitable giving. Your donations are supporting the continued exhibit building process as well as creating opportunity for additional exhibits, lectures, classes, and student research opportunities.

The donation page on our website outlines all the ways in which you can give, including via mail or in person. Online donation is often the easiest, however, and is done through Mizzou's secure Giving Day page. When choosing which fund you would like to support please choose College of Arts & Science and then select "Other" as your fund designation followed with AMERICAN ARCHAEOLOGY as the designation field recipient. Online donation can be accessed via our website or by copying and pasting Mizzou's direct link for Giving Day into your browser: <https://givingday.missouri.edu/giving-day/64976>

Your gift will send a powerful message that preservation of the Museum of Anthropology's collections is important. Thank you for loving our collections as much as we do!



## COLLECTION SPOTLIGHT

BY JOHN CUNNING

As children, many of us grew up reading stories and watching movies about Robin Hood. This legendary outlaw from England's 12th century is still remembered for his daring deeds to rob from the rich and give to the poor; and for his amazing archery skills. As it turns out, one of the longbows in the Grayson Archery Collection (MAC 2019-03-005) made cinematic history when it appeared in the 1922 feature-length silent movie *Robin Hood* starring Douglas Fairbanks. Admittedly, this movie had fewer archery scenes than any of the more recent Robin Hood movies, so the bow has few scenes, and sadly, never got a closeup.

F.H. Ayers Ltd of London made this longbow in the early 20th century. Measuring 74.5 inches (189.2 cm) long, this lancewood bow has a draw weight of approximately 37 pounds. It is not known who selected the bow for its movie debut. Years later, Walter Weber won the bow as a prize for his essay on archery in scouting. Errett Callahan acquired the bow in 1990 for display at his home "Cliffside Manor." He donated it to the Museum of Anthropology in 2019. ❖



This Victorian style longbow gained popularity in the late 19th century for target shooting.



Horn string nocks provide extra strength for the ends of the bow's limbs.

# EXHIBIT INSTALLATION UPDATE

BY JESSICA BOLDT

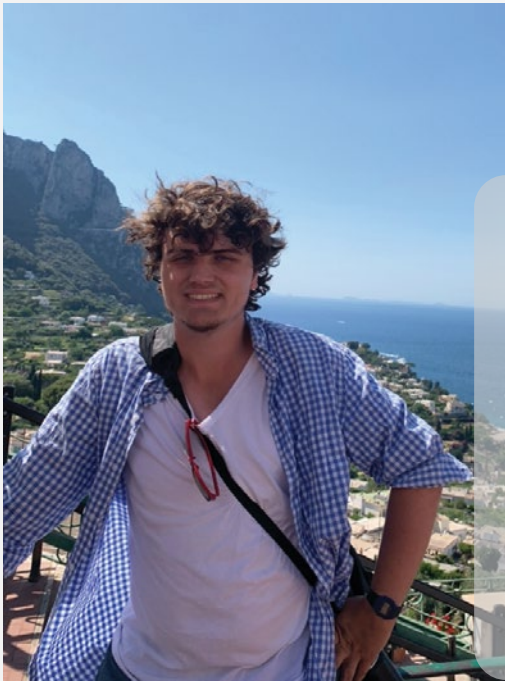
Is that a light at the end of the tunnel?! We've been hard at work cleaning cases, unpacking artifacts, and re-imagining our exhibits, and we are now delighted to report that roughly 95% of the display objects are in place and ready to be fine-tuned. A long road is still ahead of us, but we can finally see the "big picture" taking shape and hope you are as excited as we are to see the progress! ♦



# EDUCATION & OUTREACH

BY AMANDA STALEY HARRISON

The spring semester is well underway and we are delighted to have two new MU students joining us over the next few months. Ryan O'Connell joined us as our student curation technician in mid-January. Ryan is a senior at MU this year and we are excited to be a part of his academic journey before he graduates later this spring. We are also pleased to revive our MU undergraduate internship opportunity this year. The internship receives course credit through the Department of Anthropology as course catalog listing Anthro 2950 Research Skills in Anthropology/Anthro 4950 Research in Anthropology. Kurt Goddard is our first intern since reopening the internship. He is a junior in the Department of Anthropology and has been integral in assisting with the spring exhibit building projects we are working on for reopening. ♦♦



Ryan O'Connell, left, last summer in Pompeii.

Meet Ryan!

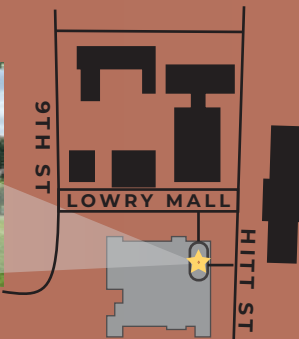
"I am Ryan O'Connell, an Anthropology and Art History senior at Mizzou. Watching movies with friends, reading old sci-fi books, and Buffalo wings are all things I enjoy. I am excited to learn about the material culture and art pieces of various indigenous groups as well as global archery."



Kurt Goddard, above, assists with object placement at the Museum of Anthropology.

1020 LOWRY ST.

ON THE  
GROUND FLOOR  
ELLIS LIBRARY



**MOA** | The MUSEUM of ANTHROPOLOGY

1020 Lowry St.  
Rm 1 Ellis Library  
Columbia, MO 65201  
573.882.3573

TEMPORARILY  
CLOSED FOR MOVING

ANTHROMUSEUM.MISSOURI.EDU