

the MoA Quarterly

A NEWSLETTER OF THE
MUSEUM OF ANTHROPOLOGY, MIZZOU

NEW THIS QUARTER:

Note From The Director

Collections Spotlight **PAGE 2**

Welcome Dr. Trusler **PAGE 3**

Education & Outreach **PAGE 4**



NOTE FROM THE DIRECTOR

Thank you for your support of the museum this year! I am extremely thankful for all the backing we received. We are working diligently on the new museum exhibits; our curators placed almost a hundred Zuni carvings in their display case this week. These were exquisitely carved by Zuni artists in the late 20th century from many different materials and range from turtles to bears to bison! You must see the malachite frog made by Fabian Tsethlikai; it has a cloud symbol on its back.

The American Archaeology Division collection recently received a new collection from Cooper County, Missouri. After recording a site on his land, Fred Fischer brought in his artifact collection for donation. The site was a stone quarry and there are several great pieces from the quarry

now in the collection for research and exhibit. Fred also volunteers at the museum, and he processed the collection to prepare it for curation and database entry.

We are gearing up to work on a project with Dr. Medeia Csoba DeHass from the Department of Geography starting in January. Dr. Csoba DeHass works with indigenous communities in Alaska on digital repatriation. Digital repatriation involves photographing and making 3D model scans of artifacts, and the images are then controlled by the communities they are from. We'll talk more about it in future newsletters as we get started.

I wish you all a wonderful holiday season and happy new year! ❖

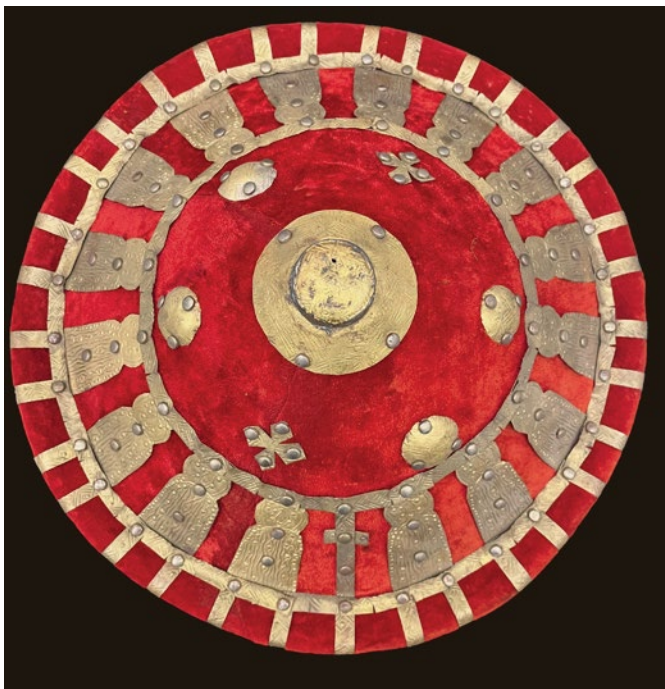
- CANDACE SALL

COLLECTIONS SPOTLIGHT: INSIGHT INTO AN ETHIOPIAN SHIELD

BY JESSICA BOLDT

Recently, Dr. Alexandra Antohin, an anthropologist who focuses on the intersection of religion and politics in everyday life, visited the Museum Support Center to take a closer look at some of the objects in the General Collection. While there, she was able to provide insight into a 19th Century shield from Ethiopia. The shield would have been used as part of the Ethiopian Orthodox Meskel Ceremony and in the festivities surrounding the pageant of Queen Eleni, who is celebrated as a key figure in finding the cross from the crucifixion of Christ. The pageant precedes the feast day that is held on September 14th. The festival of Meskel receives wide-spread significance among Ethiopians and is now inscribed on the UNESCO list of Intangible Cultural Heritage.

The Museum of Anthropology is grateful for Dr. Antohin's contributions. Details provided by visiting researchers are valuable additions and help to build stronger meaning, depth, and significance to collections in the museum's care. If you are interested in researching objects in person, visit our website and fill out our Research Request Form here: <https://anthromuseum.missouri.edu/research>.



#1968-0334 c.19th century

NEWS: GIFT SHOP SPECIAL OPENING

BY AMANDA STALEY HARRISON

Breaking News! While the museum isn't quite ready to open yet, we have been working with our next-door neighbors at the Museum of Art & Archaeology to prep our shared gift shop for a special Thursday nights only Holiday Preview and Shopping. Visit us this Thursday, December 15th, and next Thursday, December 22nd from 3 pm - 7 pm. There is a greeter at our Hitt St. entrance to welcome you into the building. The door is directly across from Gentry Hall on the east side of Ellis Library. Come support the MoA and find some wonderful, fair-trade gifts!

P.S. We also have chocolate! ♦



MOA'S NEW NAGPRA COORDINATOR

Dr. Kate Trusler has recently joined the Museum of Anthropology as the NAGPRA Coordinator. NAGPRA, or the Native American Graves Protection and Repatriation Act, works to return ancestral human remains and cultural objects to descendant Tribal communities, is a priority of the MoA's director, Dr. Candace Sall. The Museum of Anthropology has successfully received several grants from the National Parks Service to help with this work, including one awarded in October that partly funds this new position.

Kate earned her PhD in Anthropology at MU in 2017 and specializes in zooarchaeology. While Kate has worked on grant projects for the Museum of Anthropology for several years part-time, the Museum is pleased to announce this full-time role. Since graduating, Kate has also been an instructor in the Anthropology and Biological Sciences departments at MU. Recently, she also directed the third year of the Pompeii Water and Sanitation Project's study abroad field school program in Italy which she presented on at our Archaeology Month Lecture in September this year. Please give her a warm welcome if you see her out and about campus and Columbia! ❖



'TIS THE GIVING SEASON

BY AMANDA STALEY HARRISON

On Tuesday, November 29th the museum participated in Giving Day. We are so thankful for all our supporters. If you were unable to donate on Giving Day, do not fret! We love donations anytime of the year, so when you are thinking of favorite nonprofits to donate to this giving season and beyond, we hope you will consider supporting us. The donation page on our website outlines all the ways in which you can give. The easiest for many is online. We have directions and a link that goes directly to Mizzou's secure Giving Page where you will choose "Other" under the designation request and type in Museum of Anthropology as the recipient.

We have many plans in the next year for classes, workshops, and events as well as special rotating exhibits. We make it happen with the support of our friends, community and you! Thank you for loving our collections as much as we do. ❖

Giving to the MoA

The Museum of Anthropology at Mizzou is a place of continual discovery.

Each year the Museum hosts an extraordinary range of exhibitions and outreach programs, while being stewards to a collection of over 35,000 objects and a vast repository of archaeological research collections and material. The MoA is the only anthropology museum in Missouri and supports the University of Missouri academic community as well as outreach throughout the state.

A gift to the MoA helps provide comprehensive support to a spectrum of programs that serve our neighbors throughout Missouri, visitors and scholars from around the world who seek out our collections, and students who will be the researchers and teachers of the future. If you have a specific program, collection, or other priority that you would like your gift to support or would like to learn more about specific ways to support the MoA, please call 573-882-3573 to speak to a staff member who can assist you in the process.

Please, help provide a bright future for our past, and give today.

Ways to Give

Private giving is essential to the Museum of Anthropology's ability to succeed and provide for the future and we want to thank alumni and friends for the roles they play in furthering our mission to broaden the understanding of human behavior, past and present, through research, interpretation, and preservation of ethnographic and archaeological materials.

▶ Give Online

▶ Give In Person

▶ Give By Mail

MORE INFO

What will your donation support?

Gifts to the Museum of Anthropology provide programmatic support, such as:

- graduate student research
- work study opportunities for undergraduates
- educational programs for k-12 students
- collections management, curation and preservation
- community outreach programs
- lectures
- exhibits

... and so much more.

Visitors, scholars, students, researchers, teachers, and community members - all of them depend on you to help the MoA broaden our understanding of humanity and the world.

EDUCATION & OUTREACH

BY AMANDA STALEY HARRISON

How is the end of the semester and Winter Break already here? With 2023 right around the corner and the museum making great headway towards reopening, we are already thinking about and preparing for the return to our regular scheduled programming next year. We can hardly wait to see everyone in our spaces again!

Kid friendly workshops and other new and exciting outreach opportunities will be starting up again in June, including a return of our popular archaeology summer camp for middle and high schoolers. We will also be hosting a multitude of on-campus activities for Mizzou students to engage with our collections and spend time in our museum. Watch for our new calendar of events in the spring newsletter for more details. Happy New Year and here's to a bright future at the MoA! ♦

EDUCATORS - DON'T FORGET!

We are able to visit your classroom virtually or in-person. Whether you are interested in a visit from us to your classroom with artifacts from our education collection or scheduling a virtual discussion with a curator, send us an email. Let's talk about how the MoA can partner with you!

MOA | The MUSEUM of ANTHROPOLOGY

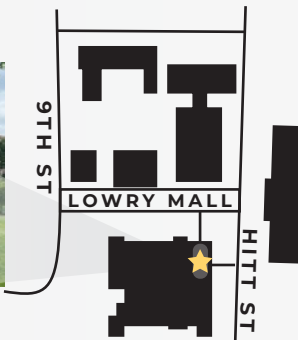
1020 Lowry St.
Rm 1 Ellis Library
Columbia, MO 65201
573.882.3573

TEMPORARILY
CLOSED FOR MOVING

ANTHROMUSEUM.MISSOURI.EDU

NEW LOCATION!

1020 LOWRY ST.
ON THE
GROUND FLOOR
ELLIS LIBRARY



Holiday Shopping

Thursdays Only!
December 8, 15, & 22, 2022
3:00–7:00pm

While the Museum is not yet open, the Museum Store will be available for shoppers at the above times each Thursday in December.

Enter the Museum through the Hitt St. ramp doors.

Greeters will meet you and let you inside.

Share this email, bring a friend, and shop for the Holidays!