

# *the* MoA Quarterly

A NEWSLETTER OF THE  
MUSEUM OF ANTHROPOLOGY, MIZZOU

## NEW THIS QUARTER:

Note From The Director

Move: In Pictures PAGE 2

New Addition to MSC PAGE 3

Build Update PAGE 4



## NOTE FROM THE DIRECTOR

The Museum of Anthropology closed our doors at Mizzou North for the last time on October 15th, 2021. We are happy with what we accomplished with the exhibits there, and excited about the future at the new location. Early Monday morning, October 18th, we began the immense job of carefully packing the collections for the move. This was all made possible by the MoA's amazing team of museum professionals and students as well as University movers. The move logistics, including knowing what is in every box and where it is at all times, were led by Jessica Boldt, our assistant curator of the American Archaeology Division. Amanda Staley Harrison, assistant curator of the museum, supervised the team of students and trained them on how to pack the many different object types. Seth Colaner, our

preparator, made spreadsheets and assisted in dismantling exhibit cases and other infrastructure. In January and February this year, all objects, from the large dugout canoe to the smallest poison arrow point, were moved with the help of the MU moving team: David Glaab and Jerale Nichols. I'm grateful for all of these wonderful individuals.

We look forward to our new space with brand new exhibits as we team up with Native American tribes to tell their stories, as well as other groups, in our new spaces. You will have to come visit us when we open to see all the changes. The new exhibit cases are framed in and the light supports are going up now, as we plan the museum exhibit specifics. We look forward to a bright spring! ♦

- CANDACE SALL

# MOVING A MUSEUM: IN PICTURES

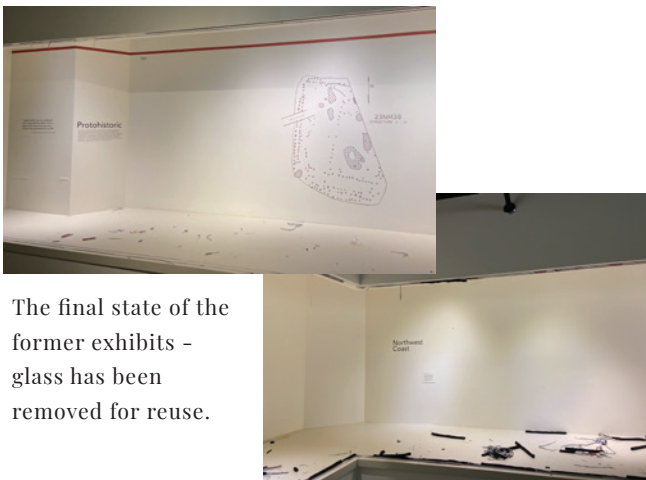


Objects came out and into the moving trucks - very thankful for MU's team of movers. Museum objects are not lightweight!



Museum objects have been placed into temporary storage at Ellis Library until the new museum space is ready for exhibit installation.

Glass shelving prepped for move by preparator, Seth.



The final state of the former exhibits - glass has been removed for reuse.



# FUNDRAISING: MIZZOU GIVING DAY

BY AMANDA STALEY HARRISON

Mizzou Giving Day is March 9th! We continue to ask for the support of friends, colleagues, museum allies and alumni to help us cover the costs of cases for our Missouri Archaeology collection, Grayson Archery, visible storage of our Mississippian vessels, as well as special exhibits, vitrines, and miscellaneous exhibit infrastructure such as lighting.

There are several ways to donate to us at this time. Our Donate page on the website ([anthromuseum.missouri.edu/donate](http://anthromuseum.missouri.edu/donate)) gives detailed instructions on how to donate. In person donations are also still very much appreciated - please contact us - we are often between buildings. Our email is [anthromuseum@missouri.edu](mailto:anthromuseum@missouri.edu) or you can call us at 573-882-3573.

Thank you as always for you generous support and many well wishes! ❖

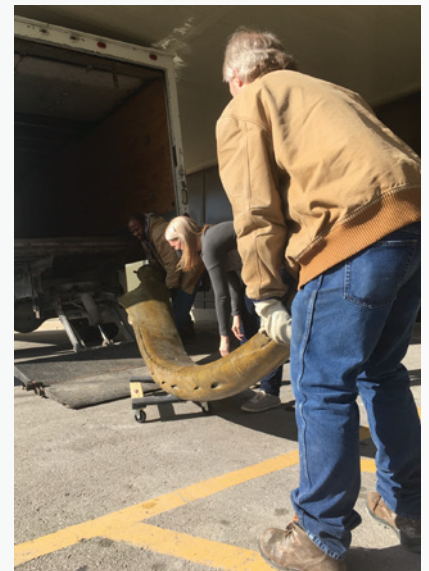
# COLLECTIONS UPDATE: ZOOARCHAEOLOGY

BY JESSICA BOLDT

The Museum of Anthropology is closed right now, but the Museum Support Center is still open as always and available to researchers. Although the exhibit objects are unavailable while in temporary storage, the vast majority of the museum's collections are located at the Museum Support Center. University of Missouri students from Dr. Todd VanPool's Lithic Analysis course are currently taking advantage of these collections to do hands-on research for their class projects this semester. Have your own research project in mind? Learn about what is available in our collections by searching the online databases available on our website: <https://anthromuseum.missouri.edu/online-databases>

We also have a new addition! We are excited to welcome Dr. Lee Lyman and his extensive comparative faunal collection to the Museum Support Center. Everything from deer bones to a massive whale jawbone is included! Bones of modern animals from the collection can be compared to archaeological faunal remains to help identify and characterize those remains. This important resource serves as a tool to advance our understanding of archaeology and the past environment through education and research. Contact us to learn more and/or to use this resource. [Anthromuseum@missouri.edu](mailto:Anthromuseum@missouri.edu) or 573-882-2926. ❖

Whale's jawbone pictured before move with our preparator for scale.



Jawbone moves to MSC from Mizzou North.

# NEW SPACE AT ELLIS LIBRARY: BUILD UPDATE

BY AMANDA STALEY HARRISON

The building teams working on our new space at Ellis Library are making great headway! Still lots of nuts and bolts to put in place (both figuratively and literally!) but we are starting to see the new cases take shape. We do not yet have a date for when the new exhibits will be able to start being put into place, but we hope by our summer newsletter they will be taking formation. Work on our office, workroom, and shop has not yet begun. The workroom and shop will be needed for prepping objects and building any special or additional mounts. For now our main office is located at the Museum Support Center on Rock Quarry Road. We can always be reached by email at [anthromuseum@missouri.edu](mailto:anthromuseum@missouri.edu).



It doesn't look like much now but soon this area will be the new Missouri Archaeology exhibits. We are excited to be able to again include a visual storage gallery for the Mississippian vessels.

This area will be part of the North American ethnographic exhibit and the new home of our Northwest Coast and Arctic objects. Across from it will be our new Osage exhibit and behind that wall we will have pieces from the Grayson Archery Collection. ♦

## EDUCATORS - DON'T FORGET!

While we are still not offering tours due to the move, we are able to visit your classroom virtually or in-person. Whether you are interested in a visit from us to your classroom with artifacts from our education collection or scheduling a virtual discussion with a curator, send us an email. Let's talk about how the MoA can partner with you!

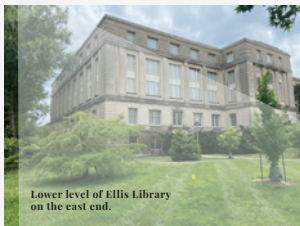
**MoA** | The MUSEUM of ANTHROPOLOGY

The museum offices are currently located at the  
**Museum Support Center**  
1411 Rock Quarry Road  
Columbia, MO 65201

TEMPORARILY  
CLOSED FOR MOVING

[ANTHROMUSEUM.MISSOURI.EDU](http://ANTHROMUSEUM.MISSOURI.EDU)

NEW  
LOCATION  
COMING  
2022



Lower level of Ellis Library on the east end.

